



Branch Committee Actions

June, 2002

Treasurer's Report

Gary distributed an analysis of Branch expenses during the last year calculated on a per member basis with the request that the Committee review it and use it as the basis of a discussion in future meetings regarding the financial plans for the Branch. In short, the Branch spent more than it took in last year. In large part this was an intentional spending down of excess reserves, but it appears that some actions relating to cost reduction or revenue enhancement will be required in future years. This prompted much discussion on the part of the Committee regarding how best to address the issue. It was observed that Gary's data was very valuable and a good management tool. The Committee agreed to return to the subject in the fall.

According to Branch policy, the Branch Committee must establish reserve levels for the Branch in June. The Committee discussed various aspects of the reserve policy, reviewed the previous reserve level and the supporting detail, and agreed to establish the Branch reserve level at \$30,000.

Based on information provided by Gary in previous meetings it was observed that the monthly parties are losing money. Based on Gary's analysis and input from members of the Branch, the Committee decided to raise the monthly party prices to \$10 for non-RSCDS members, \$8 for members, and \$2 for beginners with coupons.

Committee Activities

Membership: Bradley reported that the membership committee had had its first meeting. Among the ideas in progress is a welcome manual for new members.

Other Items

Music Archives: Paula reported that the technical portion of the project is complete and ready for mastering. Patti agreed to work with Bradley on the layout and design of the liner.

Music Fund: Dan reported that now that the funding mechanism has been established, there will need to be advocates for specific activities. He will be writing an article for the *R&S* to explain how he procured funding for live music for the Santa Cruz class. He also suggested that we might need to appoint a coordinator for the Music Fund.

Branch Representatives in Scotland: It was reported that Ken McFarland had been officially added to the list of representatives

Elections: The Branch Committee elected the following members as officers of the Branch Committee:

Chair: Paula Jacobson

Vice Chair: Larry Wakeman

Corresponding Secretary: Nancy Page

Recording Secretary: Greg Reznick

Treasurer: Gary Knox

Alex Harvey was appointed Insurance Liaison.

The outgoing chair thanked Miriam Mueller and Dan Shapiro, the outgoing members of the Committee, for their service and welcomed the new members of the Committee. The incoming chair thanked Patti Cobb, the outgoing chair, for her service as chair of the Branch Committee.

in this issue

branch committee actions /1

red thistle directions /2 monthly parties /3

pleasant hill mcmurtry music and dance /4

high desert dance scd elsewhere new sf class /5

briefing at balls /6-7

calendar /8-9

classes /10 branch officers and volunteers /11

Red Thistle

by Sue Anderson

Red Thistle’s current status is one of performing and preparing for more performing. Some activities, which were only “ifs” and “maybes” a few months ago are now under way, or in active planning stages.

In January we danced at the Valley Heritage Folk Dance Festival in Redwood City, and for the Valley View retirement facility in Lafayette. The latter was arranged by Cathy Bertics, who had us all in for tea and a tour of their new home afterwards (“Tea” presided over by Kathleen McAdam!).

March presented an interesting performance opportunity—a sort of “Scottish dancers performing for Sons of Norway for their St. Patrick’s Day dinner” kind of thing. It was a very rainy night in San Francisco, but everyone had a good time, and many in the audience enjoyed the participation dancing.

On Easter Sunday we gathered at the Cubberley Theater for the first of two filming sessions for video number three (teaching video number two). It included several dances and medleys and lots of costume changes, but we had two cameras running simultaneously and got finished before 5 p.m.! Editing is now in progress.

While John and Jennifer Kelly enjoyed a spell in Italy, Ellen Aaron and Alan Twigg kept us in top form for several upcoming events (no easy task—thanks, Ellen and Alan!). Memorial Day weekend found us amid the festivities for the Valley Heritage Festival in San Jose. (Those fortunate enough to take the SJ *Mercury News* will have been able to enjoy a tiny photo of our “dancing feet.”) June had several things in the works, including Campbell Games, the Mountain View Centennial, and Sequoias retirement facility; and in July we’ were at the Dunsmuir Games and the Reno Celtic Celebration 2002. And we were all prepared for the International Folk Art Festival Cerveny Kostelec (that’s near Prague in the Czech Republic) from August 21-25!

As always we heartily thank our supportive musicians, Lyle Ramshaw, Susan Worland Bentley, and Michael Bentley, who are there betimes to offer their time and considerable talent for rehearsals, performances, and recorded music for practice and performance. Three cheers!

DIRECTIONS TO THE ALAMEDA MASONIC TEMPLE, 2312 ALAMEDA AVENUE, ALAMEDA (between Park and Oak Streets).

FROM THE SOUTH: Take 880 North, exit at High Street (south of the Bay Bridge) and drive west across the High Street bridge into Alameda. Continue on High Street for about six blocks and turn right on Central Avenue. Go for another 10 blocks to Park Street (with traffic light, past Park Avenue). Turn left on Park Street, go one block and turn right on Alameda Avenue. The Masonic Temple is on the left about ½ block before Oak Street.

FROM THE NORTH: Take 880 South and exit at 23rd Avenue. When you have crossed the bridge going west, you will be on Park Avenue. Continue on Park until you come to Alameda Avenue and turn right. There is free parking after 6:00 pm in a city lot right across the street from the Temple, but accessible only from Central Avenue, one block east. You can turn right from Alameda onto Oak, right on Central and right into the lot, after about ½ block—or just drive straight across Park the lot after about ½ block, and walk to the Temple at the far end of the lot. The party will be in the Banquet Room on the fourth floor. There is an elevator.

DIRECTIONS TO LUCY STERN CENTER, 1305 MIDDLEFIELD ROAD, PALO ALTO

From 280: take Sand Hill Road until it bears right, and becomes Arboretum Road. Follow Arboretum Road until it bears left, and becomes Embarcadero Road. Follow Embarcadero to junction with Middle field Road. Turn left. Lucy Stern Center is 200 yards, on the right.

From 101 (Bayshore Freeway): take Embarcadero Road exit. Proceed to Middle field Road junction. Turn right. Lucy Stern Center is 200 yards on the right.

Monthly Party Admission:

New Dancers, with coupon from teacher.....	\$2.00
Members.....	\$8.00
Non-members.....	\$10.00
Non-members, please join the Branch! You can join now, as an affiliate member (January to May), for \$9.00. You receive the <i>R&S</i> , lower Party fees, help the Branch meet insurance requirements, and support the organization. Membership forms are available from your class manager, or at Monthly Parties.	

MONTHLY PARTIES

SATURDAY, OCTOBER 5, 2002

ALAMEDA MASONIC TEMPLE

Dance	Source	Type	Level
The Hollin Buss+	24/8	32J2	B
Lord Elgin's Reel	26/5	32S3	B
Raccoon Ramble+	LAD, too/40	32R3	B 3 C set
The Rose Garden+	SF vol 2	24S2	I
Quarries' Jig	36/3	32J3	I/A
The Welcome Reel+	LAD/38	32R2	B Round the room
Gypsy Dreams	Glasspool (web)	32S2	A
Mrs. Stewart's Jig+	35/1	32J3	I
The Blithest Lass that Ever Was Seen	MMM II/1	32S3	I
Bratach Bana	Drewry/Bon Accord/8	32R3	A
The Wild Geese+	24/3	32J3	B/I
Hame Came our Gudeman	30/2	32S3	I
The Wandering Drummer+	Boyd/Happy to Meet/8	32R3	B
Miss Gibson's Strathspey+	Lft 10	32S3	I
The Montgomeries' Rant	10/1	32R3	I

SATURDAY, NOVEMBER 9, 2002

LUCY STERN CENTER, PALO ALTO

Lady C. Bruce's Reel	MMM I/25	32R3	B
Strathglass House+	13/9	32S3	I
Bratach Bana	Drewry/Bon Accord/8	32R3	A
Grey Daylight+	LAD, too/18	32S2	B
The Music Makars+	33/1	32R3	I/A
Joe MacDiarmid's Jig	5 for 82/3	32J4	B
The Rose Garden	SF vol 2/10	24S2	I
Mrs. Stewart's Jig	35/1	32J3	I
Lord Elgin's Reel	26/5	32S3	B
Raccoon Ramble	LAD, too/40	32R3	B 3 C set
Corn Rigs+	4/12	32R2	B
The Blithest Lass that Ever Was Seen	MMM II/1	32S3	I
Quarries' Jig	36/3	32J3	I/A
MacDonald of the Isles+	Glendarroch 8	32S3	I 3 C set
Mason's Apron+	Border Book 18	32R3	I

+ new this month

Pleasant Hill Step Dance Class

by Lori Howard

As we began a new season at our new home in Pleasant Hill, the members of Claudette Sigg's step dance class were filled with anticipation and excitement. A new year always holds much promise for a class. New beginners are eager to learn the as-yet unfamiliar steps and dances, and returning dancers look forward to revisiting dances in the class repertoire and to learning new dances. This year was much like past years, with much fun had in learning, growing, and developing talent.

The beginners' class offered a variety of challenges to the adults, teenagers and young adults, children and parents who attended. Typical classes began with thorough warm-ups, both moving around the room to increase the heart rate and at the *barre* to work on positioning and to increase strength and control. Next, Scottish Country Dance steps, such as skip change, *pas de basque*, slip step, and strathspey traveling and setting steps, were practiced to correct individual technique and to make sure transitions between the various steps were smooth and even. Then, steps particular to step dancing, such as *coupé*, spring points, hop and travel, and Highland steps like shedding and fling turns, were introduced and practiced. Finally, dances were introduced, demonstrated, and practiced step by step, until the class was comfortable with them. The dancers started with traditional dances such as *Merry Meghan*, *Shepherd's Crook*, and *Blue Bonnets*, and then progressed to newer, beginner-level dances such as *The Thistle* and *Bridget's Suggestion*. By the later part of the term, they added variations of traditional dances and more complicated dances to their repertoire, such as a modern two-person version of *Blue Bonnets* and *Winter Moon Brooch*. By the end of the season, they had a good grasp of the basics of step dancing and were ready for more challenges.

While the beginners reviewed the basics, the intermediate dancers worked towards perfecting them, while reviewing and learning more intricate dances. About half of class time after warm-ups and step practice was devoted to reviewing dances from the class repertoire to make sure that all students, those new to the intermediate class and those returning to it, knew the steps and positioning precisely. Among the dances reviewed were *Over the Water to Charlie*, *The Lilt*, *Dancer's Delight*, the modern *Blue Bonnets*, *The Village Maid*, and *A Sprig of Heather*. The rest of class time was devoted to

learning new dances, including a twasome version of *The Thistle* and a newly choreographed dance by Claudette Sigg called *Mountain Madness*, to the Alasdair Fraser tune of the same name. Many members of the class dubbed the dance "Claudette's Revenge" because of the intricate footwork and unusual foot changes involved. The *pièce de résistance* of the dance was known as "the spin cycle" for its sequence of skip changes, a skip change turning three-quarters, moving into slip steps into a step and pivot turn, all done in a fast and furious circle. It was one of the class's most challenging dances yet, but by the end of the season it had been perfected enough to be debuted in public at the Berkeley class and to be added to the list of performing dances of the New World Scottish Dancers, of which many of the intermediate step dancers are members.

In early June, the class participated in a workshop taught by Ron Wallace and learned various Highland steps and the dance *Tulloch Gorum*. This dance proved particularly challenging for the youngest members of the class, who had already learned a slightly different version of the dance in their Highland class. But hard work and perseverance paid off, and they learned to distinguish between the two versions and to dance the appropriate one in the appropriate situation.

In sum, it was a busy and exciting year, filled with fun and challenges met. The members of both classes look forward to welcoming new beginners in the fall, to dancing with each other, to learning more, and to making their dancing the best that it can be.

Announcement

Bob McMurtry

I have just published my own dance book called "The Devil's Quandary," with sixty dances and fourteen original tunes, of which three are by Muriel Johnstone, two by Andy Imbrie, and the remainder by me. Half of the book is slanted toward beginners and the other half for more advanced dancers. It will be available for \$10 at our bookstore, from TAC Books, or directly from me. The dances include round-the-room, audience participation, and several demonstration dances and cover a wide range of interests.

**Sixth Annual
Scottish Country Dance
sponsored by the
High Desert Celtic Country Dancers.**

Saturday, October 5, 2002
Elks Lodge
20 NW Newport Ave.
Bend, OR

The guest teacher is
Marjorie McLaughlin
and music is by "A Scottish Heart."
Dances will be from the pre-1850s.

Workshop & buffet lunch	\$23.00
Evening	\$20.00
Spectator	\$4.00

For more information and registration form,
please contact Susie Allely at 541-549-7311 or at

allely@empnet.com

or Ann Marland at 541-549-7006 or at

anniem@quik.com .

SCD Elsewhere

October 2002

Sat, October 19 Windsor (ON) Branch Monthly Dance.
Moved to October 26.» **Mercer Island (WA) Teacher's
Workshop** at Congregational Church of Mercer Island,
4545 Island Crest Way . Registration 9:30am, classes
10am, dance 6:30 pm. Sponsored by Seattle Branch
RSCDS. Teachers are Bruce Hamilton (Menlo Park).
Music by Calum MacKinnon and Lisa Scot. Finger
buffet. US\$30.00. Contact Irene Paterson 425-438-8977
danceart@earthlink.net.

**Fri-Sat, October 25-26 Houston (TX) Fall 2002
Workshop and Ball** at Rice University. Friday: 7:
30pm ceilidh at Bethany Christian Church Hall, 3223
Westheimer; Saturday: Workshop, Ball, and After-
Party. Teacher is Vicky Goodloe (Kentucky). Music by
Muriel Johnstone (Scotland) and Calum MacKinnon
(Washington). Box lunch provided on Saturday. Host
hotel is Holiday Inn Select, 2712 Southwest Freeway.
Reserve a room before 12 October by calling 713-523-
8448 and mention RSCDS. Ceilidh, Workshop, Ball,
and After-Party: US\$75 before 15 September, US\$85
after. Friday Ceilidh only: US\$10. Ball and After-
Party: US\$25. Ball non-dancer: US\$10. Contact Moon
Weiss 713-465-9650 or Carol Palmer 713-776-8531.
[\[www.houstonrscds.org\]](http://www.houstonrscds.org)

Another New Beginner Class in San Francisco

Free intro class Sunday, September 29

Class starts Sunday, October 6

at UCSF Millberry Fitness Center

Bring your friends and co-workers to a FREE introductory SCD class on Sunday, September 29 at 6:00 p.m.! A new Scottish Country Dancing class for beginners starts Sunday, October 6, 6:00-9:55 p.m. at UCSF Millberry Recreation and Fitness Center in San Francisco. Susie Langdon Kass will teach the class. The fee is \$66 for the 10-week session. Starting September 16, your friends can register by mail, Fax, or in person at Millberry Recreation and Fitness Center, 500 Parnassus. Call 415-476-1115 for a catalog. Contact Susie at 415-333-9372, susielk@itsa.ucsf.edu, for more information and directions. Validated parking is just \$1.00 for the evening in the Millberry parking garage. The class is held in an aerobics studio with a great wood floor and mirrors. Tell your friends to bring tennis shoes or dance slippers; no street shoes are allowed in the studio. Continuing beginners and experienced dancers are welcome, too! It is nice to have some "angels" to help in a class for beginners.

Susie Langdon Kass

San Francisco, CA

415-333-9372

susielk@itsa.ucsf.edu

For info on Scottish Country Dancing in the SF Bay Area visit www.rscds-sf.org

“Briefing At Balls” Follow Up Preference Poll Results

Larry Wakeman

This was a poll of your preferences with regards to having dances briefed at Balls to gauge any change of opinion about the subject and to allow all interested members to express their opinion. These results have been made available to ball committees and are now being presented to the general membership through the Reel and Strathspeyper.

There were 156 responses to this poll, which is a decrease from the 184 responses from the first poll. This can be attributed to a couple of factors, possibly the fact that there were only four candidates for the four committee positions or a feeling that the poll was a nuisance. The second factor was backed up by three of the polls having comments regarding the usefulness of the poll. One comment said: “So you didn’t like the answers you got on the last poll! One poll is ENOUGH! Is this poll going to happen each year?” The poll itself stated that its purpose was to evaluate a change in opinion in the branch. In general, some of the opinions did change, as I will detail in this report.

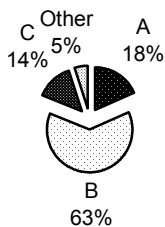
Now the Numerical results:

I would prefer:

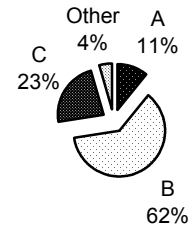
- a. No Briefings
- b. Reminder Briefings
- c. Full Briefings
- d. Other

Choice	# (2000)	% (2000)	# (2002)	% (2002)
A	34	18	17	11
B	116	63	96	62
C	26	14	36	23
D	3	1.5	2	1.25
None	1	.5	0	0
B&C	4	2	4	2.25
A,B&C	1	.5	0	0
A&B	0	0	1	.5
Total	184		156	

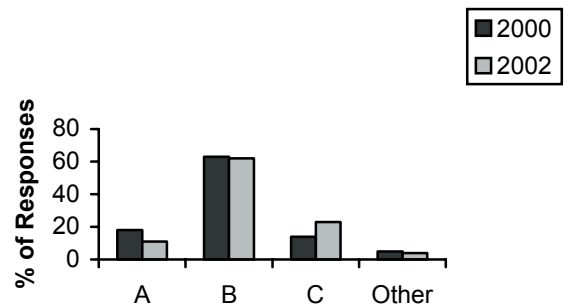
2000 Responses



2002 Responses



Responses Compared



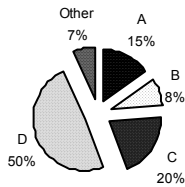
The assumption that could be inferred from this graph is that the membership in the branch is generally more in favor of briefings at the balls.

I would prefer that briefing be done on:

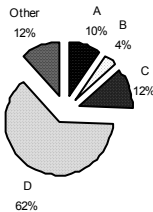
- a. No Dances
- b. Easy Dances
- c. Difficult Dances
- d. All Dances
- e.

Choice	# (2000)	%	# (2002)	%
A	28	15	15	9.5
B	15	8	6	4
C	37	20	19	12
D	89	50	98	63
E	1	.5	11	7
A&D	1	.5	0	0
B&D	2	1	0	0
A&B	0	0	1	.5
D&E	0	0	1	.5
None	8	4	5	3.25
Total	181		156	

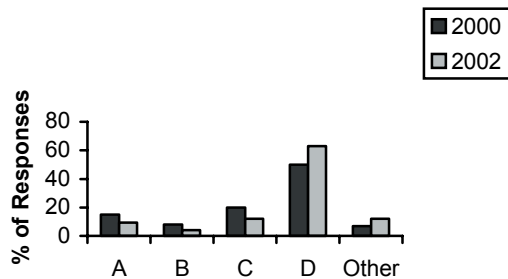
2000 Responses



2002 Responses



Responses Compared



The assumption that can be inferred from this graph is that the membership is more in favor of briefing the difficult dances.

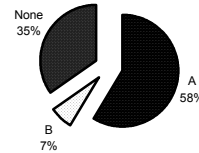
If I knew in advance that dances would be briefed at balls (1b, 1c or 1d), I would (check one):

- a. More Likely
- b. Less Likely
- c.

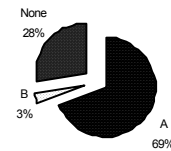
Choice	# (2000)	%	% (2002)	%
A	98	58	108	69
B	11	7	5	3
None	58	35	43	28
Total	167		156	

The comments from these answers tend to indicate that no response indicates that briefings would have no influence on attendance

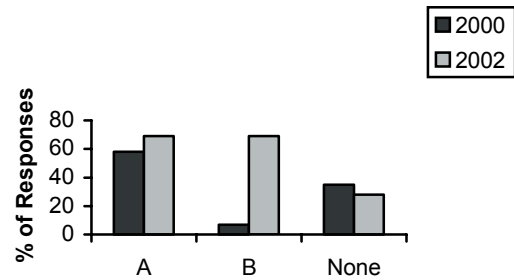
2000 Responses



2002 Responses



Responses Compared



The assumption that can be made from this chart is that the branch membership feels that briefings or their lack has more influence on whether or not they will attend.

The number of comments and their size was greatly reduced in this poll. If you would like to see all of the comments, drop me a line, preferably email (lcwakeman@aol.com) and I will send you a copy.

RSCDS-SF CALENDAR OF EVENTS

revised August 9, 2002

SEPTEMBER, 2002

3, Tuesday:

Three Rivers Class resumes: Richard 559/561-4595

4, Wednesday:

Stockton Class resumes: Charles 209/465-8871
 Mountain View Class Bring A Friend Night:
 Denise 510/713-7813

5, Thursday:

San Francisco Class New Beginners: Linnea 415/841-9456
 Pleasant Hill Step Dance Class starts: Claudette 510/526-8192
 Lafayette Class - new beginners: Witsie 925/676-3637
 Redding Class resumes: Margaret 530/472-1154

6, Friday:

Soquel Class resumes: Alisa 831/469-8313
 Mill Valley Class resumes: Marghie 415/884-2716
 Last Berkeley Grace & Elegance Class:
fred@fmacondray.com

9, Monday:

San Jose Class new beginners: Sparky 408/257-2294
 Santa Rosa Classes resume: Emily 707/874-2512
 Berkeley Intermediate Class Resumes: Heather 510/653-7507

11, Wednesday:

Regular Mountain View Classes start: Denise 510/713-7813

13, Friday:

Berkeley Class new beginners: Heather 510/653-7507

16, Monday:

Monterey Class new beginners: Kathy 831/663-3227

18, Wednesday:

Reno Class resumes: Marian 775/825-1224
 Stockton Chance to Dance: Charles 209/465-8871

19, Thursday:

Lafayette Childrens Class resumes: Kathleen 925/934-6148
 Reno class resumes: Dave 775-825-6867

20, Friday:

Berkeley Youth Class resumes: Kathleen 925/934-614
 Berkeley Beginners Class resumes: Ian 510/642-7795
 Berkeley Advanced Social Class resumes: Ian 510/642-7795
 Campbell Beginners class begins: Rebecca 408/378-3817
 Campbell Advanced Beginners Class begins: Rebecca 408/378-3817

21, Saturday:

Teachers' Committee Mtg. 1 PM Bruce 650/238-0474

22, Sunday:

Waltz & Hambo Workshops, Santa Cruz: Dotty 831/423-6165

28, Saturday:

Dixon Scottish Games, 9 AM - 6 PM 707/678-5354

29, Sunday:

San Francisco UCSF Class New Beginners: Susie 415/333-9372

OCTOBER, 2002

5, Saturday:

October Monthly Party, Alameda: Sandra 707/643-9162

6, Sunday:

Asilomar Ball Preview, 1-5 PM. Lafayette Vets Hall: Tim 415/440-7438

12, Saturday:

Asilomar Ball Preview, 1-5 PM, St. Mark's, Palo Alto: Tim 415/440-7438

20, Sunday:

Asilomar Ball Preview, 1-5 PM, Lafayette Vets Hall: Tim 415/440-7438

26, Saturday:

Asilomar Ball Preview, 1-5 PM, St. Mark's, Palo Alto: Tim 415/440-7438

31, Thursday:
 Santa Cruz Class Family Night: Juliet 408/733-9035

NOVEMBER, 2002

1-3, Fr-Sunday:
 ASILOMAR Workshops and Ball: julm-hcs@pacbell.net
 8, Friday:
 Campbell Beginners & Advanced Beginners
 Classes begin: Rebecca 408/378-3817
 9, Saturday:
 Monthly Party, Palo Alto: Sandra 707/643-9162
 27, Wednesday:
 Mountain View Class Thanksgiving Bash:
 Denise 510/713-7813

DECEMBER, 2002

7, Saturday:
 Monthly Party, San Mateo: Sandra 707/643-9162
 11, Wednesday:
 Mountain View, Last Classes Before Christmas
 Break: Denise 510/713-7813
 14, Saturday:
 Berkeley Holiday Party, potluck, caroling, dancing: Heather
 510/653-7505
 19, Thursday:
 San Francisco Class Solstice Party: Linnea 415/841-9456
 28, Saturday:
 Lafayette Tween Party, Vets Hall: Witsie 925/676-3637

JANUARY, 2003

4, Saturday:
 Monthly Party, Mountain View: Sandra 707/643-9162
 18, Saturday:
 Teachers' Committee Meeting: Bruce 650/328-0474

FEBRUARY, 2003

15, Saturday:
 Valentine's Ball: Art 650/365-5574

MARCH, 2003

1, Saturday:
 Monthly Party, Mountain View: Sandra 707/643-9162

APRIL, 2003

5, Saturday: (aft.)
 Children's Ball - by invitation: Kathleen 925/934-6148
 5, Saturday: (eve.)
 Monthly Party, Mill Valley: Sandra 707/643-9162
 26, Saturday:
 Teachers' Committee Meeting: Bruce 650/328-0474

MAY, 2003

3, Saturday:
 Monthly Party, Alameda: Sandra 707/643-9162

JUNE, 2003

7, Saturday:
 Monthly Party, Soquel: Sandra 707/643-9162
 19, Thursday:
 San Francisco Class Solstice Party: Linnea 415/841-9456
 21, Saturday:
 Campbell Games????
 28, Saturday: (tentative)
 Truckee Workshop and Dance: Marian 775/825-1224

The Reel & Strathspey is a bi-monthly publication of the San Francisco Branch of the Royal Scottish Country Dance Society, a nonprofit educational organization. Annual subscription is \$6.00, third class mail. Add \$3 for 1st class. For changes of address, please contact Gene Bissell, 101 Via Lucia, Alamo, CA 94507.

The editor reserves the right to alter or edit any material submitted for publication for reasons of taste, space, style or clarity. All materials for publication should be submitted on diskette in a word processing format, or sent by e-mail prior to the deadline (the 1st of even-numbered months). Exceptions will be made for last-minute notices, or on a space-available basis, when the editor is notified prior to the deadline.

Editors of other newsletters may use or adapt any materials in the Reel & Strathspey unless a specific copyright notice is included. Please credit author and original source.

Next deadline: October 1, 2002

Editor..... Victoria Williams

Design..... Mary Margaret Judd McMurtry

Production Mike Hird

Printing..... Apollo, A Printing Company

DistributionRobert Behling, Alan Kaplan,

Hildegarde Klee, Taylor Mayes, John McComas, Shari

Salis, Bob Sholtz, Victoria Williams & Helen Wood

All articles submitted should be on diskette in a word processing format or sent by e-mail. Please send contributions to:

Victoria Williams, Editor
1224 Peralta Avenue
Berkeley, CA 94706-2406
510.526.5854
e-mail: victoria@uclink4.berkeley.edu



SAN FRANCISCO BRANCH, INC.

1224 Peralta Avenue, Berkeley, CA 94706-2406

Non-Profit Org.
U.S. Postage Paid
Oakland, CA
Permit No. 989

**Dated material –
please do not delay**